

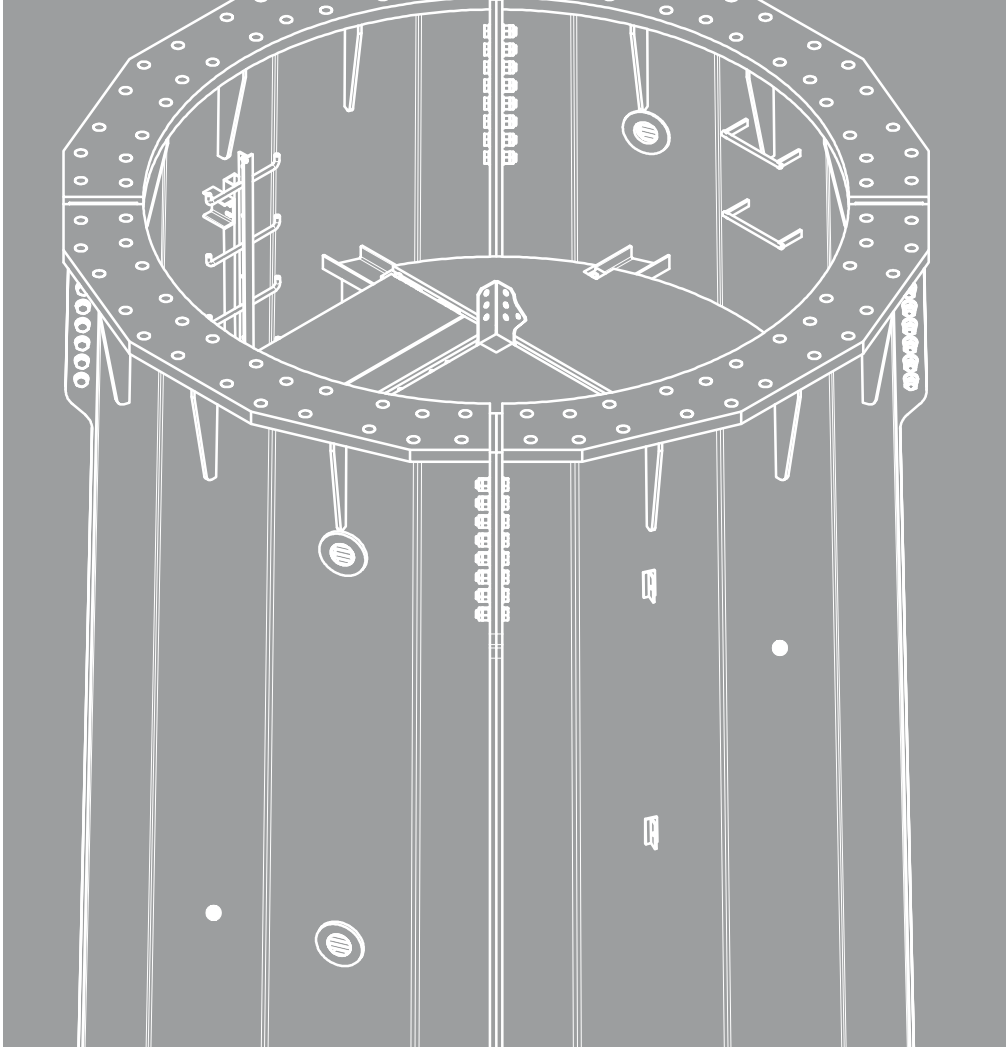
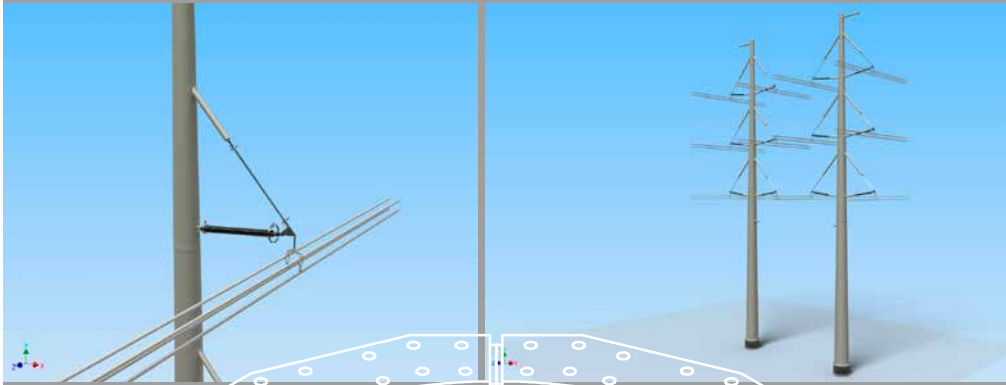
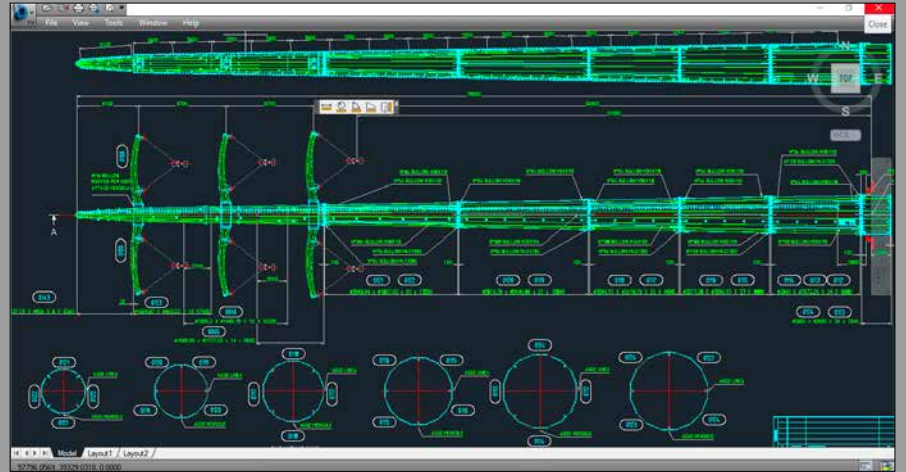
STEEL MONOPOLES



Armando Cimolai
Centro Servizi s.r.l.

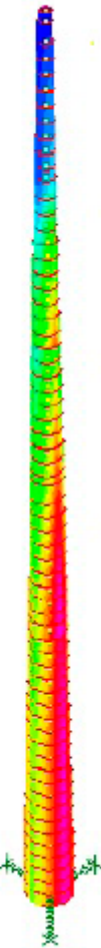
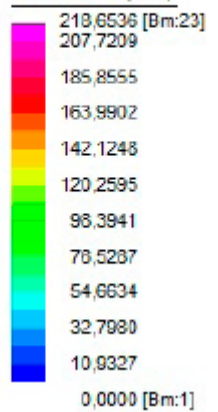
ENGINEERING

POLES sections are normally joined by telescoping or slip splices to transfer shears and moments. Locking devices or flanged joints will be needed if the splice is subjected to uplift forces.

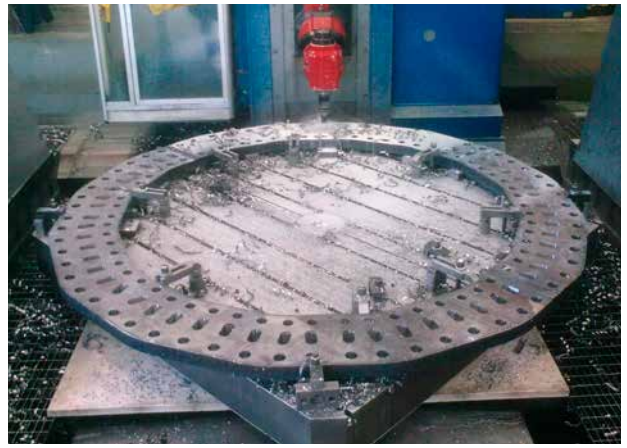


Strength Analysis

Fibre Stress (MPa)

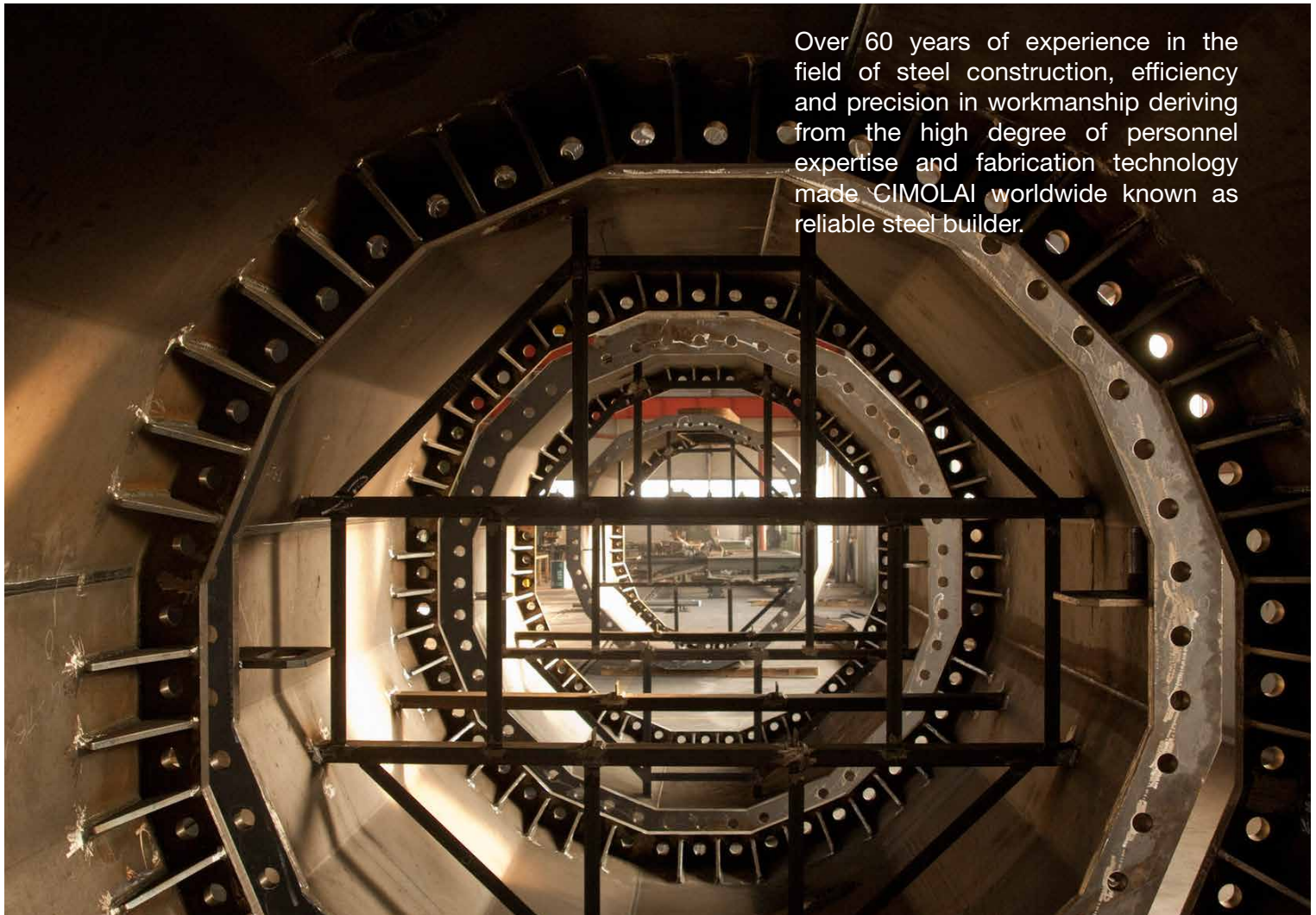


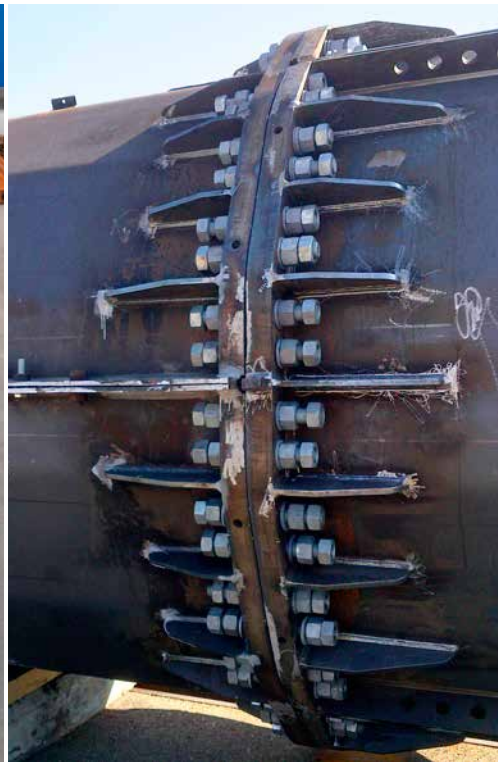
PRODUCTION



**Highly automated machinery.
Quality control is performed
by in-house qualified personnel.**

Over 60 years of experience in the field of steel construction, efficiency and precision in workmanship deriving from the high degree of personnel expertise and fabrication technology made CIMOLAI worldwide known as reliable steel builder.





Trial erection of POLES at the fabrication works is a traditional way of ensuring that fit-up and geometry can be achieved at site, so reducing the risk of delays in erection or damage to protective treatment. Partial trial erection involving complex or close fitting connections, such for flanged joints, is also justifiable.

PRE-ASSEMBLING TRANSPORT



Transport may be either road truck, rail or ship (by means of containers). POLES shall not be damaged during transport therefore shall be supported by suitably shaped timber bolsters.

ERECTION



70.000 SqM

SAN QUIRINO PLANT



CERTIFICATES



Armando Cimolai
Centro Servizi s.r.l.

Armando Cimolai Centro Servizi Srl

Zona Industriale - Via Masieres, 32 - 33080 San Quirino PN Italy - T. +39 0434 919292 - F. +39 0434 919266
e-mail: accs_sanquirino@cimolai.com

www.cimolaicentroservizi.com